

NATflow™ is a non-instrumented nucleic acid amplification system with lateral flow detection. Ideally suited to isothermal amplification based diagnostics methods, for IVD and non-IVD applications

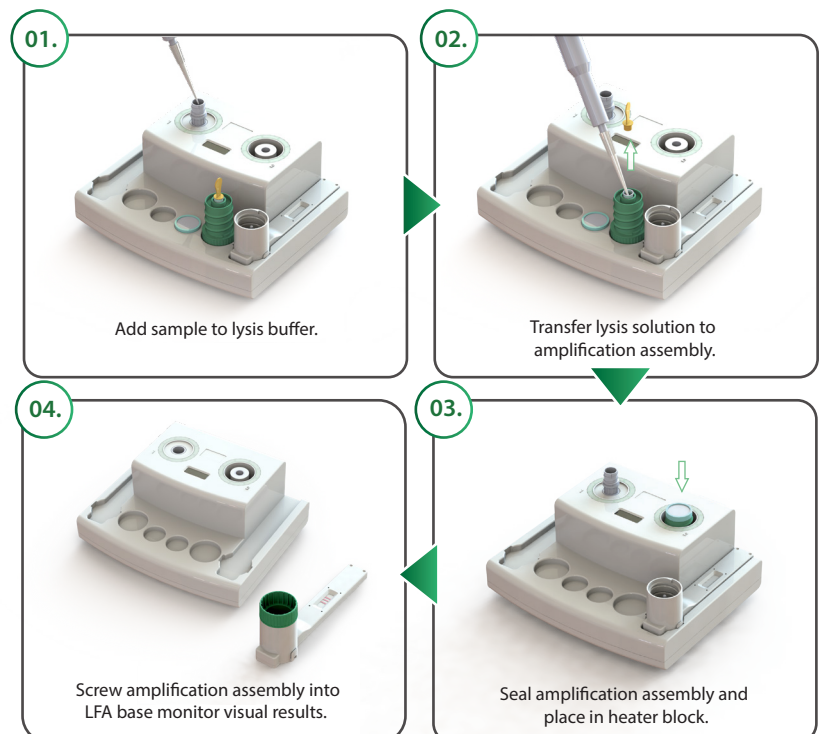
Commonly referred to as NALF (Nucleic Acid Amplification over Lateral Flow) in scientific literature.



## Key Benefits for POC applications are:

- Rapid test results typically under 30 minutes
- High Sensitivity molecular detection
- Low cost cartridge and workflow station suitable for field use
- Suitable for high volume-low cost disposable cartridge applications
- Sealed closed system with patented features to eliminate exposure to amplicons
- Easy to use workflow
- Off-grid, stand-alone operation
- Compatible with all isothermal amplification chemistries including LAMP

## Sample to Answer Work Flow



Australian Office  
Ground Floor, 582 Heidelberg Rd  
Fairfield, VIC, 3078, Australia  
T + 61 3 9329 1167  
F + 61 3 8732 0310  
ABN 43 120 905 839

USA Office  
400 Continental Blvd, 6th Floor  
EL Segundo, CA, 90245, USA  
T + 1 858 736 9160  
F + 1 858 346 9300

UK Office  
18 King William Street  
London, EC4R 9AN, UK  
T + 44 (0) 203 960 7512

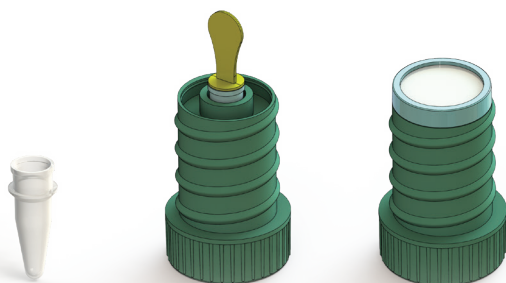
[www.axxin.com](http://www.axxin.com)  
[sales@axxin.com](mailto:sales@axxin.com)



© 2022 Axxin  
All rights reserved  
D012291v2

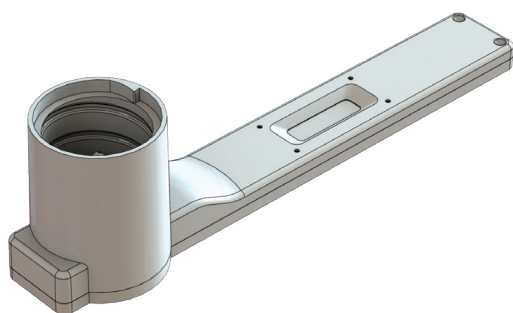
Medical Diagnostics | Environmental | Bio-Defence | Food Testing  
Veterinarian | Biomarkers | Agriculture

## NATflow Sample receiver and sample tube in sample receiver



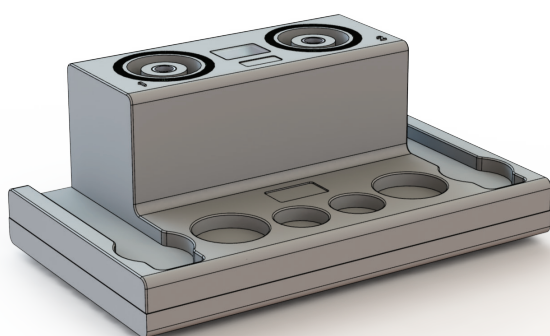
- Standard 200µl PCR tube
- 450µl Buffer solution capacity
- Secure twist lock mechanism for fully sealed system

## NATFlow Cartridge



- Lateral flow detection following amplification
- Sealed sample window
- Sealed test strip
- Controlled buffer solution
- Lateral flow detection following amplification
- Compatible with AX-2X-S LFA Reader, visual & fluorescent reporters

## NATFlow Workstation



- High precision aluminium heater block
- Dual heated chambers (Sample Lysis & Amplification)
- Status LED ring and audible indication
- Programmable countdown timer
- NATFlow sample receiver detection
- Independent programmable temperature settings
- Extended battery operation - Multi day

### Product includes:

|          |  |
|----------|--|
| P003749  | NATFlow Workstation  |
| PC003354 | 12 V DC External Power Supply (with multiple world adapters) |
|          | Product Manual   |
| P003123  | NATFlow Cartridge  |

Contact our sales team for more information  
sales@axxin.com | www.axxin.com